



NEW ZEALAND VINES & VIEWS

Designed to include the best of New Zealand, this tailored itinerary will take you to the country's iconic regions and sites, as well as more out-of-the-way spots. Immerse yourself in the Land of the Long White Cloud, and discover what makes this South Pacific nation so special. You'll be charmed by the Maori culture and amazed by the magnificence of the countryside. You'll experience breathtaking landscapes filled with towering mountains and untamed wilderness. You'll find great beauty in the stunning glaciers and dramatic fjords; and you'll be awestruck by wonderful sandy beaches, endless coastlines, and active geothermal regions. While this tour concentrates on visiting New Zealand's wealth of spectacular scenery and the timeless culture, we will also sample the destination's excellent wines and fabulous food. Join us for a tour that explores caves with sparkling glowworms, quaint and historic countryside towns, and cosmopolitan cities. This trip is sure to get a standing ovation!



APRIL 12 - APRIL 26, 2023



wednesday, april 12, 2023

DEPART U.S.

Board your overnight flight from your home city.

friday, april 14, 2023

ARRIVE IN AUCKLAND, NEW ZEALAND

Welcomes to Aotearoa, the Land of the Long White Cloud — also known as New Zealand. Transfers between the airport and hotel are arranged for your arrival. Normal hotel check-in times apply. If your room is not ready the hotel will gladly hold your luggage for you while you wander or grab a bite to eat. Meet your fellow travelers and your Globus Tour Director this evening at your Welcome Dinner, served at a local restaurant.

Meals Included – Dinner

Hotel – Sky City Auckland or Similar

HIGHLIGHTS

Arrive in Auckland

Welcome Dinner



AUCKLAND - WAIHEKE ISLAND

Take in the cityscape of Auckland City as you enjoy a refreshing ferry ride to Waiheke Island. The island is only a brief 40 minutes away, and yet can feel like hundreds of miles away from New Zealand's major metropolis. From first class wineries to artist colonies, you are sure to find this island a lovely way to ease into your New Zealand adventure. Tour of Waiheke includes visits to an Olive Grove where you will learn about the history of the olive oil industry on the island and enjoy tastings. Then on to a wine tasting followed by a visit to the Waiheke Art Gallery which supports the local artist community. Next, a special lunch amongst the vines before we sample more incredible wines. We will complete the day at one the best restaurants in the region. Return to Auckland after sunset and, enjoy seeing the city all twinkling at night.

Meals Included – Breakfast, Lunch, Dinner

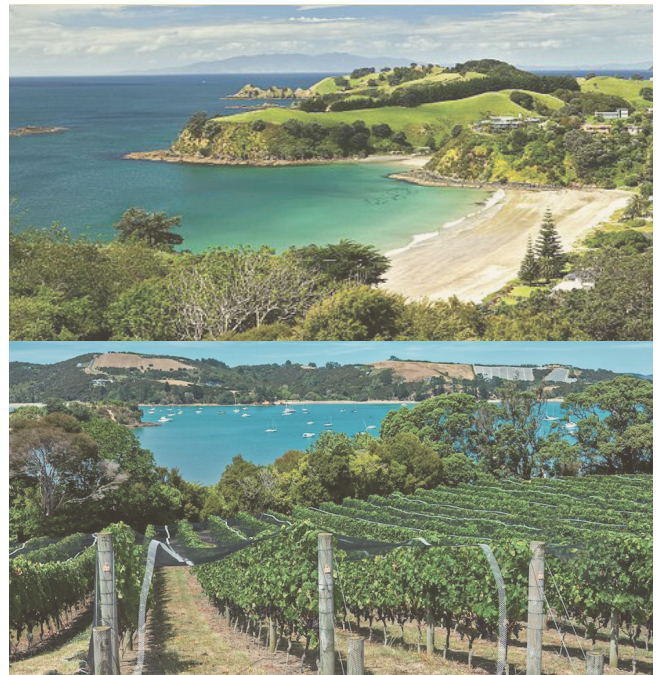
Hotel – Stamford Plaza or similar

HIGHLIGHTS

Waiheke Island Tour

Olive Grove

Wine Tasting



AUCKLAND – WAITOMO – ROTORUA

Leave Auckland this morning, after breakfast, heading south to Waitomo. Experience the world-famous Glowworm Caves. Marvel at Mother Nature's light display as you glide silently through the starry wonderland of the Glowworm Grotto. Continue to Rotorua for a Traditional Hangi Concert and Feast. You will be sung to by the Marae (Maori community). As you enter, you're greeted by the Haka, traditional war dance, followed by the gentle Hongi, touching of noses and sharing of life force (breathe). This evening's festivities include traditional Maori storytelling dances and a delicious meal prepared in the Earth

Meals Included – Breakfast, Dinner

Hotel – Distinction Hotel Rotorua or similar

HIGHLIGHTS

Waitomo Glowworm Caves

Hangi Concert & Feast



ROTORUA – IVA – WELLINGTON

Today enjoy a guided tour which includes a visit to the Kiwi Hatchery to see native bush and wildlife including the shy Kiwi bird and Te Puia, home to New Zealand's largest geyser, boiling mud pools, and silica terraces. This afternoon, relax and rejuvenate at one of the local spas for which Rotorua's healing waters are world renown. An afternoon flight will take you from Rotorua to New Zealand's capital Wellington

Meals Included – Breakfast

Hotel – Rydges Wellington or similar

HIGHLIGHTS

Kiwi Hatchery

Rotorua Spa



WELLINGTON

Your fun packed day begins with a scenic and historic ride on Wellington's funicular to the Wellington Botanic gardens. Be sure to try the participatory sundial at the top of the hill, before winding your way down through the 25 hectares (64 acres) of beauty, peace, and tranquility. Established in 1844, the Wellington Botanic Garden is home to some of the oldest exotic trees in New Zealand. Today, the native and exotic forests are complemented by a duck pond, a begonia house and cafe, colorful floral displays, an herb garden, an Australian garden, and the award-winning Lady Norwood Rose Garden. Meet your coach as you exit the gardens and drive by the Beehive and Parliament buildings, then take in the 360-degree views from Mount Victoria. Your tour ends with a visit at the Te Papa Museum, the National Museum of New Zealand. This afternoon, take a Walking Food Tour in New Zealand's coolest capital city, Wellington, experience the unique food and drink explosion that has made Wellington the trendiest little capital in the world. This is one of the most interesting and memorable food tours which will take you on an amazing adventure around Wellington. You will explore the hidden gems and eat and drink the magic of local taste sensations.

Meals Included – Breakfast, Dinner

Hotel – Rydges Wellington or similar

HIGHLIGHTS

Wellington Funicular & Botanic Garden

Te Papa Museum

Walking Food Tour



WELLINGTON – NELSON

This morning we'll take the Interisland Ferry from Wellington to Picton, in Plus Lounge. Be sure to have your camera ready as you enter the Queen Charlotte Sound. You will want to capture the memory of being surrounded by this breathtaking scenery. Enroute to Nelson, we will stop for lunch amongst the vineyards in Blenheim, which is famous for its wine. Dinner tonight at local restaurant.

Meals Included – Breakfast, Lunch, Dinner

Hotel – Hotel Nelson or similar

HIGHLIGHTS

Queen Charlotte Sound Cruise

Blenheim Wine Tasting



NELSON – ABEL TASMAN NATIONAL PARK

After breakfast at the hotel, enjoy the scenic ride to Kaiteriteri, the Gateway to the Abel Tasman National Park. Here, inviting sandy beaches fill the spaces between trees and tide line. Crystal clear streams tumble down mossy valleys to join the ocean. Granite and marble formations fringe the headlands, which are cloaked in regenerating native forest. Experience a special cruise through Abel Tasman National Park, including an indulgent lunch with a classic Kiwi barbecue. Return to Nelson for dinner at local restaurant.

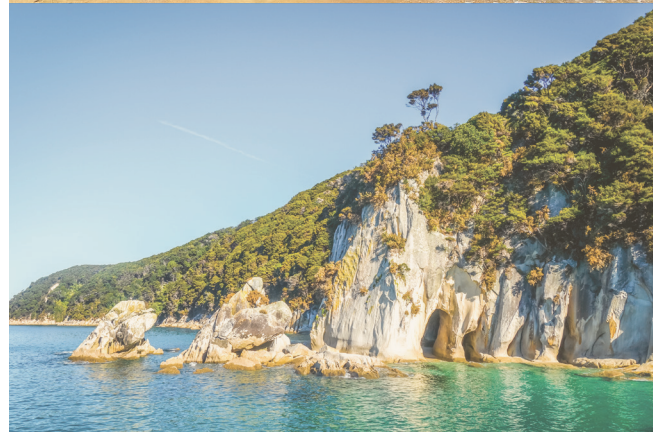
Meals Included – Breakfast, Lunch, Dinner

Hotel – TBD

HIGHLIGHTS

Abel Tasman National Park

Kiwi Barbecue Lunch



NELSON – BLENHEIM/MARLBOROUGH – CHRISTCHURCH

Today, travel through the Wairau region to the sunny Marlborough area known for over 100 different wineries. This Valley of Vines area is known for award winning Sauvignon Blancs and delectable fresh seafood. The vibrancy of flavor and aroma that distinguishes Marlborough's grapes is the result of a unique combination of soils, crisp nights, and sun-kissed days across the region's vine-filled valleys, producing wines of unmatched intensity and aroma. We'll stop for lunch and a wine tasting at a local vineyard. The region has been producing wines since early pioneers recognized something special in the land and planted the first vineyards in the 1880's. Rich reds and vibrant pinot noir are also favorites from the Marlborough region, along with fragrant Chardonnay and crisp Riesling. The coastal drive along the East Coast will wow you with a stop at Kaikoura. We continue to Christchurch, nick-named the Garden City because for every area which has been built upon, there is 4 times the amount of green space.

Meals Included – Breakfast, Lunch

Hotel – Novotel Christchurch Cathedral Square or similar

HIGHLIGHTS

Marlborough Wine Region

Kaikoura Coastal Town



CHRISTCHURCH – TRANZALPINE RAIL

Experience one of the most beautiful rail rides in the World, the TranzAlpine. New Zealand rail travel is an exercise in relaxation. The main reason to take this train journey is the spectacular scenery you simply can't see from the road. Leaving Christchurch this morning you travel through the pasture lands reminiscent of the rolling hills of Britain. Then cross the Southern Alps on a journey that links the city of Christchurch to historic Greymouth, a river town on the rugged West Coast. Highlights include the 73-metre-high Staircase viaduct, Arthur's Pass National Park and the Otira tunnel. The TranzAlpine covers 223.8 kilometers. There are 19 tunnels and four viaducts.

Meals Included – Breakfast

Hotel – Novotel Christchurch Cathedral Square or similar

HIGHLIGHTS

TranzAlpine Rail Journey

Greymouth Visit



CHRISTCHURCH – QUEENSTOWN

After breakfast, you have guided sightseeing around Christchurch which includes famous landmarks and the city's spectacular gardens. Visit the International Antarctic Center to learn more about their Polar neighbor with an included Haagland experience. This afternoon, take a short flight to Queenstown then enjoy a local wine tasting whilst sharing a bountiful dinner in a world-famous winery in Gibbston Valley.

Meals Included – Breakfast, Dinner

Hotel – Ramada Queenstown Central or similar

HIGHLIGHTS

Christchurch Tour

Antarctic Centre

Gibbston Valley Wine Tasting



QUEENSTOWN – MILFORD SOUND EXCURSION

Described by Rudyard Kipling as the ‘eighth wonder of the world’, Milford Sound was carved by glaciers during the ice ages. Breathtaking in any weather, the fiord’s cliffs rise vertically from the dark waters, mountain peaks scrape the sky and waterfalls cascade downwards from as high as 1000 meters. When it rains in Milford Sound, and it often does, those waterfalls multiply with magnificent effect. Included in your 3.5 hour cruise is entrance to the Milford Deep Observatory and a tasty lunch. Dinner this evening at the Stratosphere restaurant at the top of the gondola in Queenstown. A more glimmering dining vista would be difficult to come by.

Meals Included – Breakfast, Lunch, Dinner

Hotel – Ramada Queenstown Centre or similar

HIGHLIGHTS

Milford Sound Cruise

Milford Observatory



QUEENSTOWN

Today you start with one of the most picturesque settlements in New Zealand; Arrowtown sits alongside the gold-bearing Arrow River and is just 20 minutes from Queenstown. The town was established in 1862, during the height of the Otago gold rush. The settlement grew quickly as pioneers constructed cottages, shops, hotels, and churches, more than 60 of which can still be seen today. A special highlight is the Chinese settlement at the edge of the river. Built by Chinese miners from 1868, this area of restored shelters and buildings paints a picture of earlier times. Continue to the site of the world's first bungee jump location The Kawarau Gorge Suspension Bridge. It still is in operation today if you want to try (extra cost and courage required)! Return to Queenstown for a relaxed afternoon. This evening, relive the elegance of turn of the century travel with a cruise aboard an iconic century-old coal-fired steamship. Watch the stokers fuel the fireboxes, feel the heat from the boilers and hear the steam engines working as "the Lady of the Lake" takes you across beautiful Lake Whakatipu to Walter Peak High Country Farm for a Farewell BBQ Dinner. Afterwards, watch the sheepdogs in action before your return cruise.

April 25 is ANZAC day in New Zealand. ANZAC day is a national day of remembrance that broadly commemorates all Australians and New Zealanders who served and died in all wars. No businesses are open until after 1pm in New Zealand on this day.

Meals Included – Breakfast, Dinner

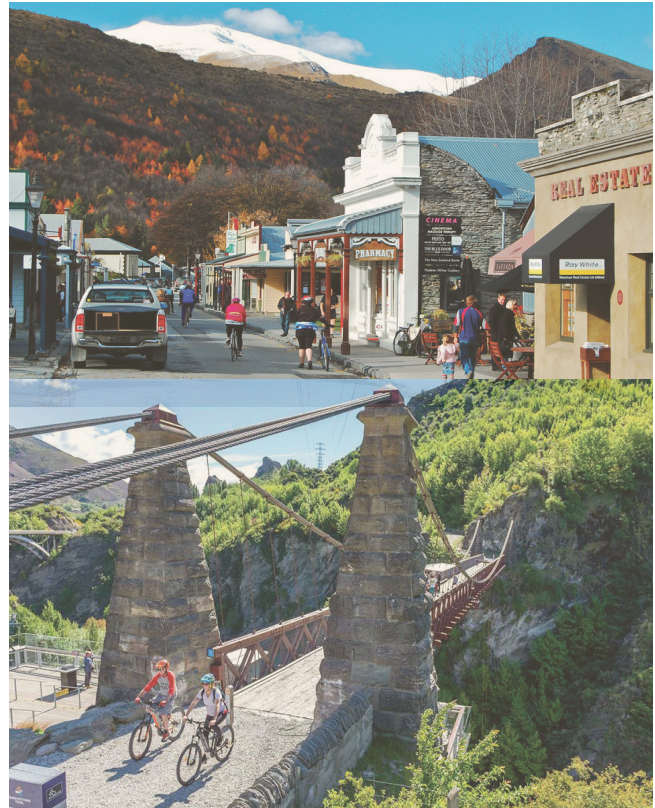
Hotel – Ramada Queenstown Centra or similar

HIGHLIGHTS

Arrowtown Tour

Kawarau Gorge Suspension Bridge

Walter Peak High Country Farm



DEPART NEW ZEALAND

After breakfast at the hotel, meet your individual transfers to Queenstown Airport for your departure flight.

inclusions

INCLUDED

12 nights' accommodations at superior first-class hotels as shown or similar

Sightseeing, tours, activities & attractions as shown

Breakfast daily, five lunches, nine dinners

Tour Director, local guides

Private coach throughout

Internal airfare, train, boats

Taxes

NOT INCLUDED

International airfare

Meals when not mentioned as included

Room service & personal room charges

Excess baggage and portorage

Tour Director, driver, & local guide gratuities

Visa and visa services fees

Trip cancellation and travel insurance

Additional pre/post nights



rates

\$7,670

Double occupancy (per person)

\$9,157

Single occupancy

Space is limited on this tour, and it will be sold on a first-come basis upon receipt of deposit. You must have a valid passport for travel to New Zealand. Your U.S. passport must be valid for six months beyond your return dates and have at least two blank visa pages. You will need an ETA (electronic visa) for travel to New Zealand. This tour requires a minimum of 20 people to operate. Wineries, hotels, dinners, activities, and attractions are subject to change. Please read through the attached booking terms and conditions for further details and important information.

deposit & final payment

\$1,000 DEPOSIT (NON-REFUNDABLE)

per person, due upon making reservations

FINAL PAYMENT

due by January 19, 2023

This tour requires a minimum of 20 participants to operate at the costing shown. Falling below 20 participants might create additional cost. Final payment will be due January 19, 2023. Forms of payment include cash, check, MasterCard, Visa, or American Express.

airfare

Airfare is not included but we are happy to assist you secure your air tickets. Our air ticketing fee is \$50 per ticket. You need to arrive in Auckland (AKL) on April 14, 2023, which means you need to depart the USA on April 12, 2023. A transfer will be set up for you to meet your flight time. Your first event will be a dinner the evening on April 14, so we recommend you land by 2 PM. Your departure home is on April 26, 2023, and your departure is from Queensland Airport (ZQN).

land cancellation policy

This tour is non-refundable. Trip cancellation and travel insurance is recommended and will be quoted at the time of booking. If we have a waitlist, we may be able to assist with a name change instead of a cancellation on land only. Name changes have a \$200 per person administrative fee. There is no guarantee we will have someone to take your spot in which case full cancellation fees will apply. Air tickets are non-refundable from the time of ticketing. No name changes are allowed on air tickets.

reservations



**Carol's Travel Service,
A Frosch Company**
21200 S. LaGrange Road, Unit 358
Frankfort, IL 60423

708-532-5450 • 800-535-2670
carol.lekki@frosch.com
margo.moy@frosch.com





COOPER'S HAWKTM
WINERY & RESTAURANTS

WINE TRIP | NEW ZEALAND

